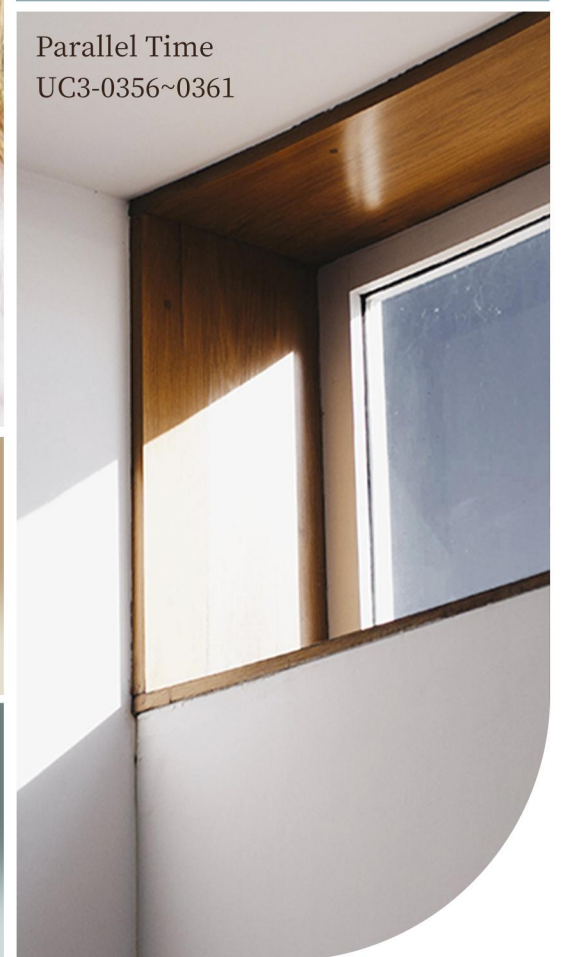
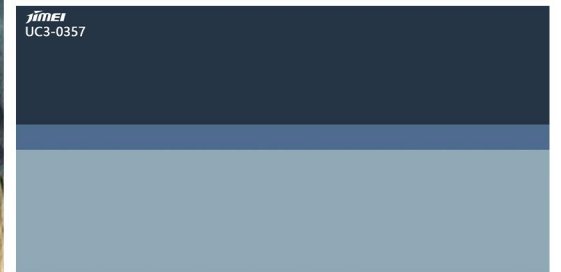


# HKOF 2024 COLLECTION

Be Your Best Choice



Tranquility  
UC-0349~0355



Parallel Time  
UC3-0356~0361

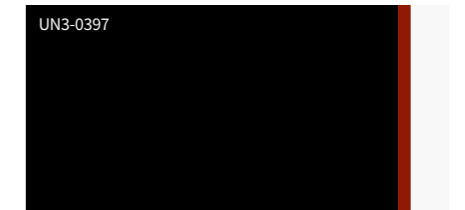


Discover more @ [www.jimei123.com](http://www.jimei123.com)

# TRACING COLOR

*Extruded 3 layers*

*The overlaying of solid and transparent textures allows the colors to vividly leap and burst forth, adding a rich sense of depth. Each collision of colors represents a journey of tracing creativity, using the language of color to describe the signs of beauty.*



***TRACING COLOR***

UN3-0395-0400

Extruded 3 layers





# TRACING COLOR

Extruded 3 layers

## PRODUCT CODE

Front	Temple
UN3-0395	UN3-0395
UN3-0396	UN3-0396
UN3-0397	UN3-0397
UN3-0398	UN3-0398
UN3-0399	UN3-0399
UN3-0400	UN3-0400
<b>Thickness</b> 6.0mm(6.0-6.2mm)	<b>Thickness</b> 4.0mm(4.0-4.2mm)
<b>Standard Size</b> 170x1400mm	<b>Standard Size</b> 170x1400mm
<b>Tolerance</b> 168-175mm 1400-1410mm	<b>Tolerance</b> 168-175mm 1400-1410mm

\*Acetate Renew are available in this series and are also standard products. Their product codes are prefixed with "JMS" before the Regular Acetate codes.

### Front:



### Temple:



UN3-0395



UN3-0396



UN3-0397



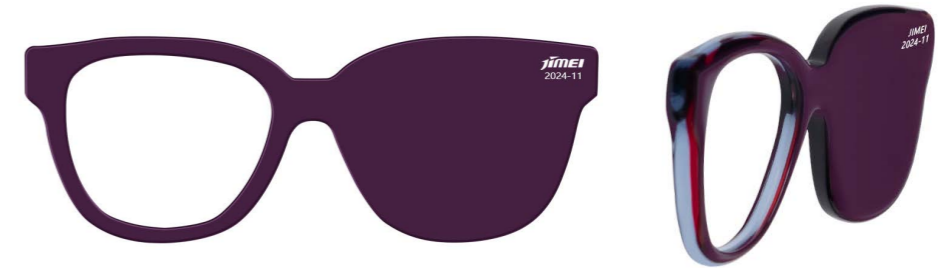
UN3-0398



UN3-0399



UN3-0400



# TRANQUILITY

*Gradient/Milky monicolor*

*The subtle blend of milky and transparent colors in gradient creates a serene and contented atmosphere, with the soft hues whispering gently, conveying messages of tranquility and relaxation.*



**TRANQUILITY**

UC-0349-0355

UN-0710-0716

Gradient/Milky monicolor





# TRANQUILITY

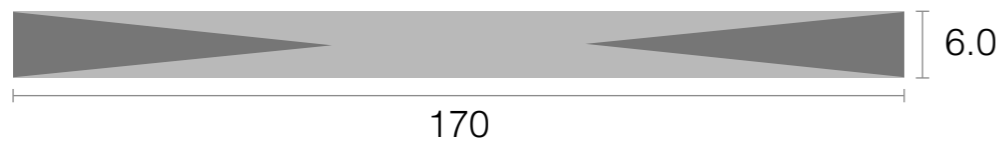
Gradient/Milky monicolor

## PRODUCT CODE

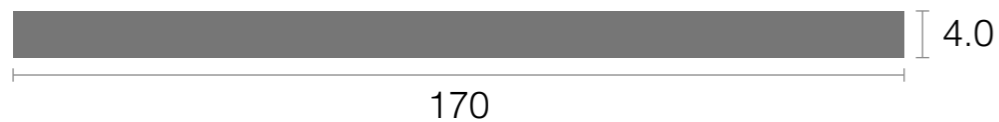
Front	Temple
UC-0349	UN-0710
UC-0350	UN-0711
UC-0351	UN-0712
UC-0352	UN-0713
UC-0353	UN-0714
UC-0354	UN-0715
UC-0355	UN-0716
<b>Thickness</b> 6.0mm(6.0-6.2mm)	<b>Thickness</b> 4.0mm(4.0-4.2mm)
<b>Standard Size</b> 170x1400mm	<b>Standard Size</b> 170x1400mm
<b>Tolerance</b> 168-175mm 1400-1410mm	<b>Tolerance</b> 168-175mm 1400-1410mm

\*Acetate Renew are available in this series and are also standard products. Their product codes are prefixed with "JMS" before the Regular Acetate codes.

**Front:**



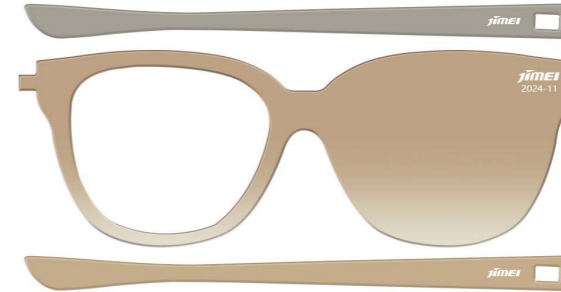
**Temple:**



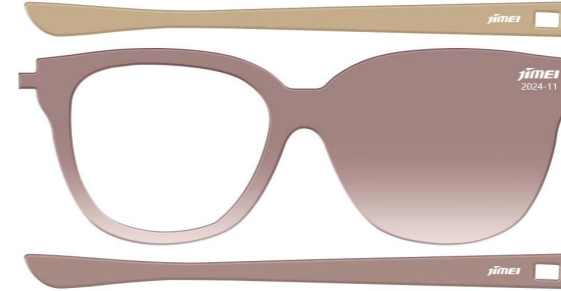
UC-0349



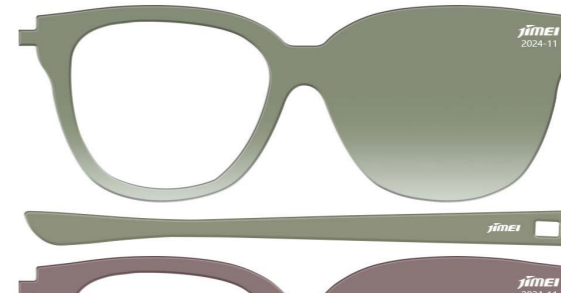
UC-0350



UC-0351



UC-0352



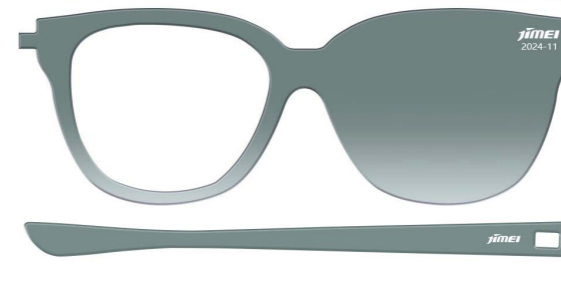
UC-0353



UC-0354



UC-0355



# PARALLEL TIME

*Gradient/Transparent monocolor*

*The parallel spread of different shades within the same color system resembles light and shadow delicately shuttling through quiet space, creating a soft and orderly visual experience. It reveals the extraordinary charm of a nuanced design style and the elegance of color transition.*





***PARALLEL TIME***

UC3-0356-0361

UN-0717-0722

Gradient/Transparent monicolor





# Parallel Time

Gradient/Transparent monicolor

## PRODUCT CODE

Front	Temple
UC3-0356	UN-0717
UC3-0357	UN-0718
UC3-0358	UN-0719
UC3-0359	UN-0720
UC3-0360	UN-0721
UC3-0361	UN-0722

Thickness	Thickness
6.0mm(6.0-6.2mm)	4.0mm(4.0-4.2mm)

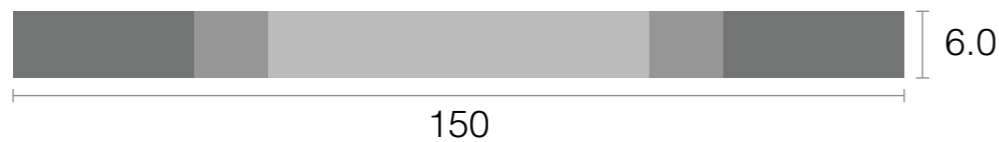
Standard Size	Standard Size
150x1400mm	170x1400mm

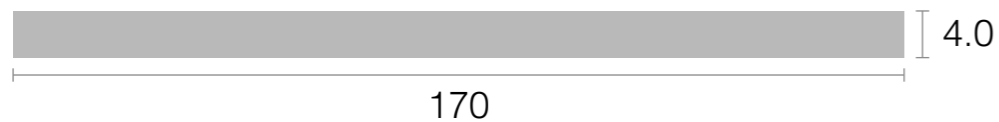
Tolerance	Tolerance
148-155mm	168-175mm
1400-1410mm	1400-1410mm

\*Acetate Renew are available in this series and are also standard products. Their product codes are prefixed with "JMS" before the Regular Acetate codes.

Front:



Temple:



UC3-0356



UC3-0357



UC3-0358



UC3-0359



UC3-0360



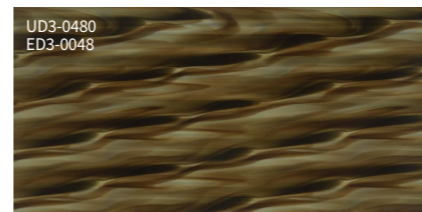
UC3-0361



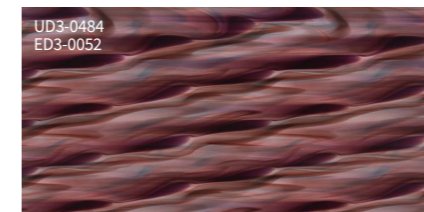
# ***RADIANT BEAMS*** ***RADIANT BEAMS-ESSN***

***Demi***

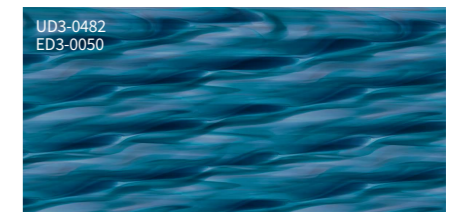
*Transparent colors meander through overlapping ripples, akin to the gentle sunlight reflecting on the waves, stirring vibrant ripples that paint a fluid canvas, exuding lively vitality.*



UD3-0480  
ED3-0048



UD3-0484  
ED3-0052



UD3-0482  
ED3-0050

**RADIANT BEAMS**  
**RADIANT BEAMS-ESSN**

UD3-0480-0485 ED3-0048-0053

Demi





# RADIANT BEAMS

Demi

## PRODUCT CODE

Front	Temple
UD3-0480	UD3-0480
UD3-0481	UD3-0481
UD3-0482	UD3-0482
UD3-0483	UD3-0483
UD3-0484	UD3-0484
UD3-0485	UD3-0485
<b>Thickness</b> 6.0mm(6.0-6.2mm)	<b>Thickness</b> 4.0mm(4.0-4.2mm)
<b>Standard Size</b> 190x1400mm	<b>Standard Size</b> 190x1400mm
<b>Tolerance</b> 188-195mm 1400-1410mm	<b>Tolerance</b> 188-195mm 1400-1410mm

\*Acetate Renew are available in this series and are also standard products. Their product codes are prefixed with "JMS" before the Regular Acetate codes.

Front:



Temple:



UD3-0480



UD3-0481



UD3-0482



UD3-0483



UD3-0484



UD3-0485





# RADIANT BEAMS-ESSN

Demi

## PRODUCT CODE

Front	Temple
ED3-0048	ED3-0048
ED3-0049	ED3-0049
ED3-0050	ED3-0050
ED3-0051	ED3-0051
ED3-0052	ED3-0052
ED3-0053	ED3-0053

<b>Thickness</b> 6.0mm(6.0-6.2mm)	<b>Thickness</b> 4.0mm(4.0-4.2mm)
<b>Standard Size</b> 190x1400mm	<b>Standard Size</b> 190x1400mm
<b>Tolerance</b> 188-195mm 1400-1410mm	<b>Tolerance</b> 188-195mm 1400-1410mm

Front:



Temple:



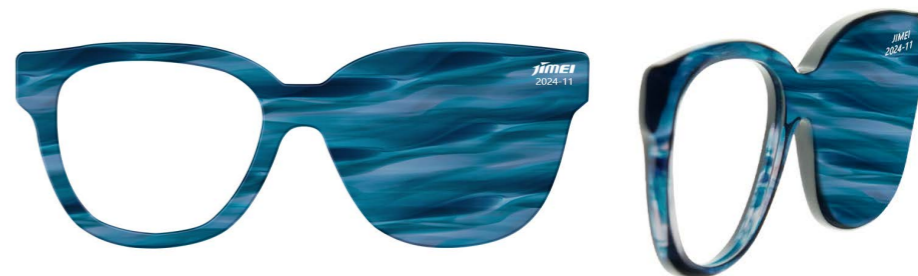
ED3-0048



ED3-0049



ED3-0050



ED3-0051



ED3-0052



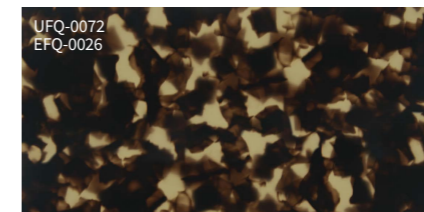
ED3-0053



***TALES OF NATURE***  
***TALES OF NATURE-ESSN***

*Classical havana*

*Extracting the tranquil brown from the warm autumn, and blending it with the natural milky colors, forms a cozy and harmonious havana style, interpreting the charm of nature through color.*



**TALES OF NATURE**  
**TALES OF NATURE-ESSN**

UFQ-0072-0077 EFQ-0026-0031

Classical havana®





# TALES OF NATURE

Classical havana

## PRODUCT CODE

Front	Temple
UFQ-0072	UFQ-0072
UFQ-0073	UFQ-0073
UFQ-0074	UFQ-0074
UFQ-0075	UFQ-0075
UFQ-0076	UFQ-0076
UFQ-0077	UFQ-0077

Thickness	Thickness
6.0mm(6.0-6.2mm)	4.0mm(4.0-4.2mm)

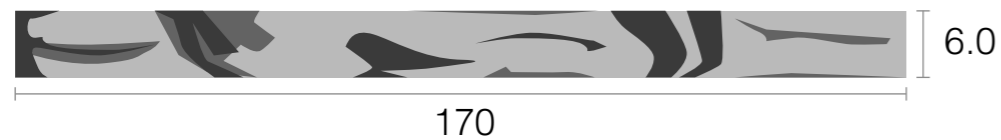
Standard Size	Standard Size
170x700mm	170x700mm

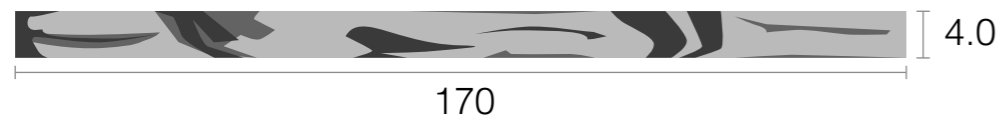
Tolerance	Tolerance
167-172mm 690-702mm	167-172mm 690-702mm

\*Acetate Renew are available in this series and are also standard products. Their product codes are prefixed with "JMS" before the Regular Acetate codes.

Front:



Temple:



UFQ-0072



UFQ-0073



UFQ-0074



UFQ-0075



UFQ-0076



UFQ-0077





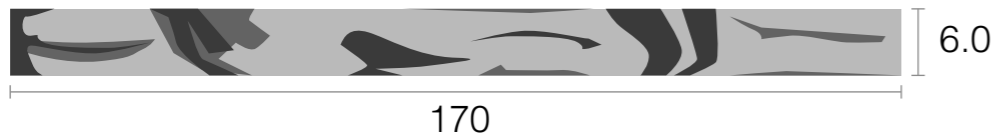
# TALES OF NATURE-ESSN

Classical havana

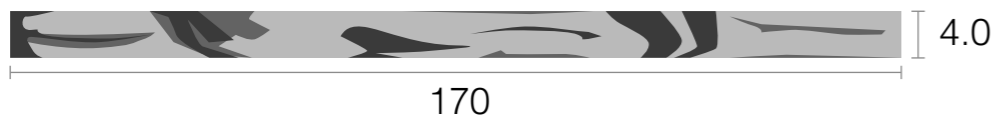
## PRODUCT CODE

Front	Temple
EFQ-0026	EFQ-0026
EFQ-0027	EFQ-0027
EFQ-0028	EFQ-0028
EFQ-0029	EFQ-0029
EFQ-0030	EFQ-0030
EFQ-0031	EFQ-0031
<b>Thickness</b> 6.0mm(6.0-6.2mm)	<b>Thickness</b> 4.0mm(4.0-4.2mm)
<b>Standard Size</b> 170x700mm	<b>Standard Size</b> 170x700mm
<b>Tolerance</b> 167-172mm 690-702mm	<b>Tolerance</b> 167-172mm 690-702mm

Front:



Temple:



EFQ-0026



EFQ-0027



EFQ-0028



EFQ-0029



EFQ-0030



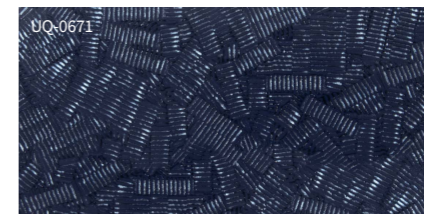
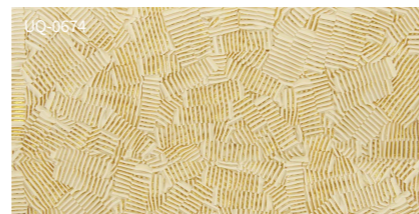
EFQ-0031



## ***CREATE ELEGANCE***

### ***Dry block***

*Classic hues are reborn in the interwoven textures of lines, evoking a dynamic sense of layering beauty. Glittering elements are interspersed throughout, infusing a sense of sumptuousness into the overall style. This manifests an exquisitely elegant fashion presence.*



***CREATE ELEGANCE***

UQ-0668-0674

Dry block





# CREATE ELEGANCE

Dry block

## PRODUCT CODE

Front	Temple
UQ-0668	UQ-0668
UQ-0669	UQ-0669
UQ-0670	UQ-0670
UQ-0671	UQ-0671
UQ-0672	UQ-0672
UQ-0673	UQ-0673
UQ-0674	UQ-0674
<b>Thickness</b> 6.0mm(6.0-6.2mm)	<b>Thickness</b> 4.0mm(4.0-4.2mm)
<b>Standard Size</b> 170x700mm	<b>Standard Size</b> 170x700mm
<b>Tolerance</b> 167-172mm 690-702mm	<b>Tolerance</b> 167-172mm 690-702mm

\*Acetate Renew are available in this series and are also standard products. Their product codes are prefixed with "JMS" before the Regular Acetate codes.

Front:



Temple:



UQ-0668



UQ-0669



UQ-0670



UQ-0671



UQ-0672



UQ-0673



UQ-0674

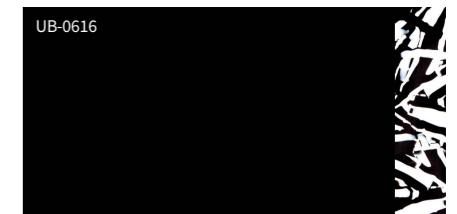


\* This product series contains striped elements, which may appear slightly blurred after the dry block process.

## ***BLACK&WHITE***

***Solid monicolor/Extruded 2 layers  
Dry block/Lamination***

*Using black and white to interpret different product types, the combination is like a dialogue between night and day, where depth reveals light, and purity encompasses strength. Transcending the boundaries of black and white, it allows the classic to remain as timeless as ever.*



***BLACK&WHITE***

UN-0723,UN2-0386,UFQ-0078,UQ-0676,  
UB-0616,UB-0617,UFQ-0079,UQ-0675

Solid monicolor/Extruded 2 layers  
Dry block/Lamination



# BLACK&WHITE

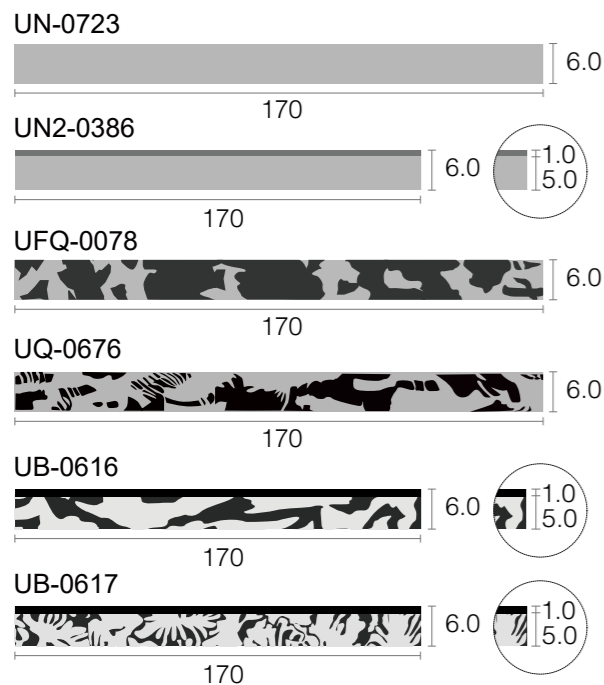
Solid monicolor/Extruded 2 layers/Dry block/Lamination

## PRODUCT CODE

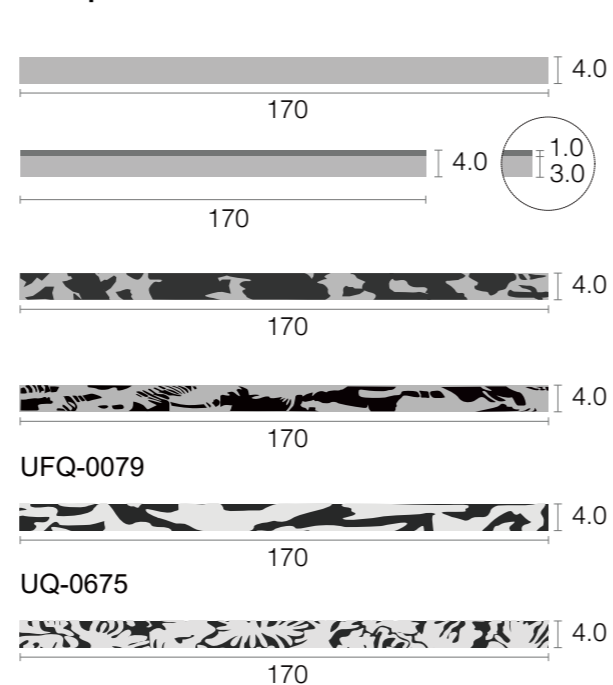
Front	Temple
UN-0723	UN-0723
UN2-0386	UN2-0386
UFQ-0078	UFQ-0078
UQ-0676	UQ-0676
UB-0616	UFQ-0079
UB-0617	UQ-0675
<b>Thickness:</b> 6.0mm(6.0-6.2mm)	<b>Thickness:</b> 4.0mm(4.0-4.2mm)
<b>Standard Size:</b> 170x1400/170x700mm	<b>Standard Size:</b> 170x1400/170x700mm
<b>Tolerance:</b> 168-175/167-172mm 1400-1410/690-702mm	<b>Tolerance:</b> 168-175/167-172mm 1400-1410/690-702mm

\*Acetate Renew are available in this series and are also standard products. Their product codes are prefixed with "JMS" before the Regular Acetate codes.

### Front:



### Temple:



UN-0723



UN2-0386



UFQ-0078



UQ-0676



UB-0616



UB-0617







# Thanks for watching!

—  
Be Your Best Choice



Discover more @ [www.jimei123.com](http://www.jimei123.com)