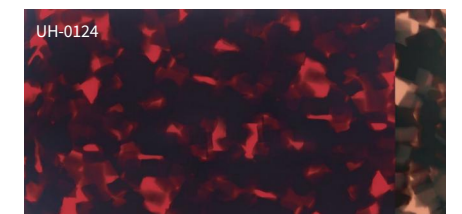
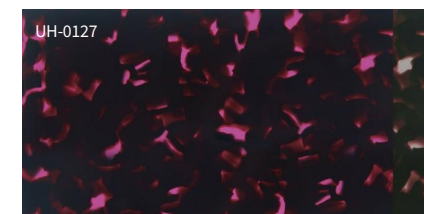
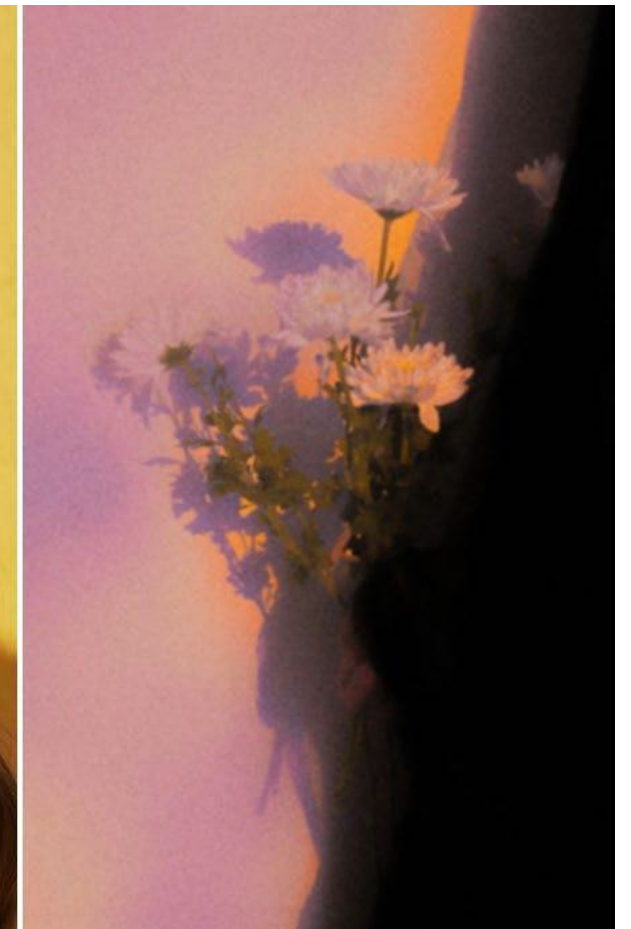


# CHANGING SUMMER

*Lamination with havana*

*The lamination of bright transparent colors and traditional havana inject fresh vitality into classic elements, awakening the changing summer time with vivid colors.*





***CHANGING SUMMER***

UH-0124-0129

Lamination with havana







## CHANGING SUMMER

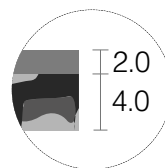
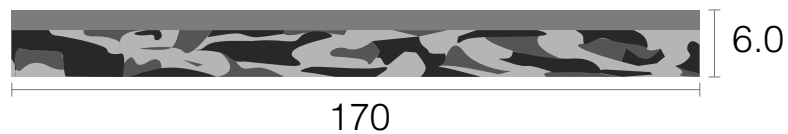
Lamination with havana

### PRODUCT CODE

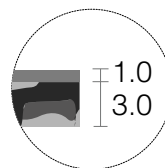
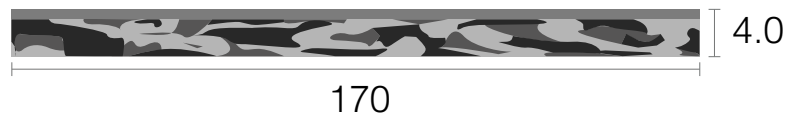
| Front                                      | Temple                                     |
|--|--|
| UH-0124                                    | UH-0124                                    |
| UH-0125                                    | UH-0125                                    |
| UH-0126                                    | UH-0126                                    |
| UH-0127                                    | UH-0127                                    |
| UH-0128                                    | UH-0128                                    |
| UH-0129                                    | UH-0129                                    |
| <b>Thickness</b><br>6.0mm(6.0-6.2mm)       | <b>Thickness</b><br>4.0mm(4.0-4.2mm)       |
| <b>Standard Size</b><br>170x700mm          | <b>Standard Size</b><br>170x700mm          |
| <b>Tolerance</b><br>167-172mm<br>690-702mm | <b>Tolerance</b><br>167-172mm<br>690-702mm |

\*Acetate Renew are available in this series and are also standard products.  
Their product codes are prefixed with "JMS" before the Regular Acetate codes.

Front:



Temple:



## SUMMER 2024 COLLECTION-REGULAR/RENEW

UH-0124



UH-0125



UH-0126



UH-0127



UH-0128



UH-0129

